

2/2 WAY PULSE VALVE

Valves for Dust Collector Service

Kushako

RMF 25 & 20

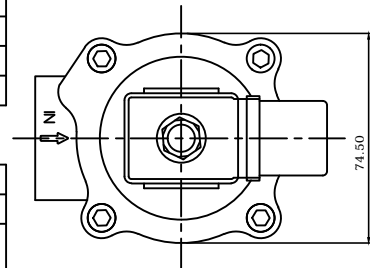


APPLICATION DETAILS

FLUID (MEDIUM) CONTROLLED	COMPRESSED AIR		
ADDITIVES ETC.	N/A		
FLUID (MEDIUM) TEMPERATURE	MAX : 85° C	MIN : -20° C	
VISCOSITY	MAX : N/A	MIN : N/A	
ALLOWABLE LEAKAGE	ZERO (BUBBLE TIGHT)		
OPERATING PRESSURE	MAX : 8.5 BAR	MIN : 0.35 BAR	NORMAL : 7 BAR
AMBIENT TEMPERATURE	MAX : 85° C	NORMAL : 55° C	
ALLOWABLE PRESSURE DROP	10% OF INLET PRESSURE		

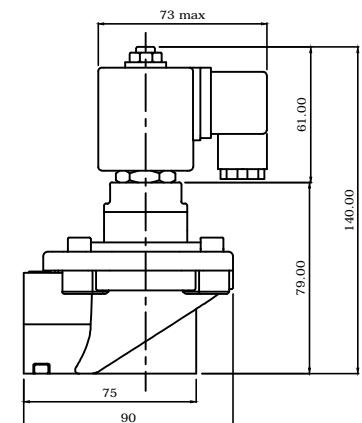
ELECTRICAL DETAILS

MAKE	KUSHAKO
MODEL	RMF-20 & RMF-25
VOLTAGE	230 V AC :- ±10%, 50Hz, Single Phase. 24 V DC :- ±10%, 50Hz, Single Phase.
COIL CONSTRUCTION	EPOXY MOULDED / PLASTIC MOULDED
COIL CLASS	CLASS - F, SUB CLASS - FT
COIL TERMINATION	EMBEDDED SCREWED / 3 PIN TERMINAL
COIL ENCLOSURE	MILD STEEL WATER PROOF ENCLOSURE WITH EMBEDDED SCREW REMINAL COIL / PLASTIC MOULDED
TYPE OF PROTECTION	IP 65 / IP 67
CABLE ENTRY	1/2" NPT CONDUIT CONNECTION / DIN CONNECTOR (AS PER I.S.O Std.)
MOUNTING	SUITABLE FOR ANY POSITION
DUTY	ON - OFF DUTY, ON TIME : 20 TO 200 MSEC (ADJ.) / OFF TIME : 2 TO 60 SEC (ADJ.)
POWER CONSUMPTION	230 VAC 6 W , 24 VDC 8 W.
INRUSH VA	54



VALVE CONSTRUCTION :

FORM OF FLOW	2/2 NORMALLY CLOSED
VALVE BODY	DIE CAST ALUMINIUM
VALVE SEATS / DIAPHRAGM	HI-NITRILE RUBBER
PIPE SIZE	3/4" (20 NB) & 1" (25 NB)
THREADED PIPE CONNECTION	ISO 228 / 1 (G)
ORIFICE	20 & 25 MM
KV (FLOW FACTOR)	17 & 22 M ³ / Hr.



Manufactured by :

Kushako India

Office : 490, Narayan Peth, Opp. Pune Marathi Granthalaya, Pune - 411030. (Maharashtra), Website : www.kushakoindia.com

Works : Sr.No. 25/1A, Village Nanded, Sinhgad Road, Tal - Haveli, Dist. Pune -411041

Tel. No :9011389777, 7620674777

E-mail : kushako.india@gmail.com / kushakoindia1992@gmail.com

